



AEGEAN HOMES

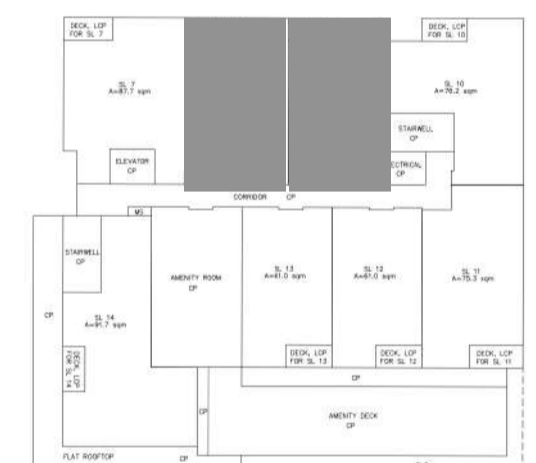
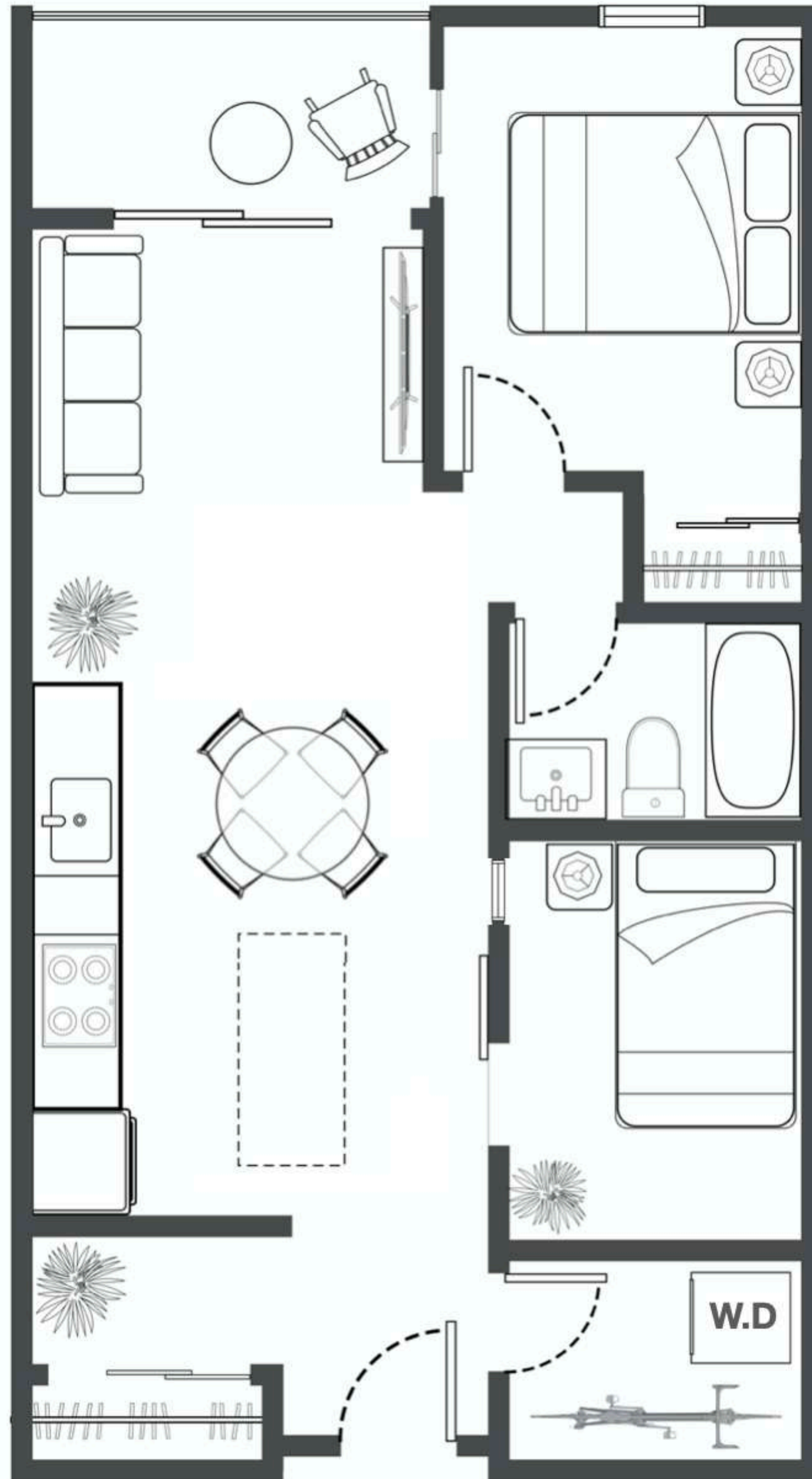


Aegean Homes

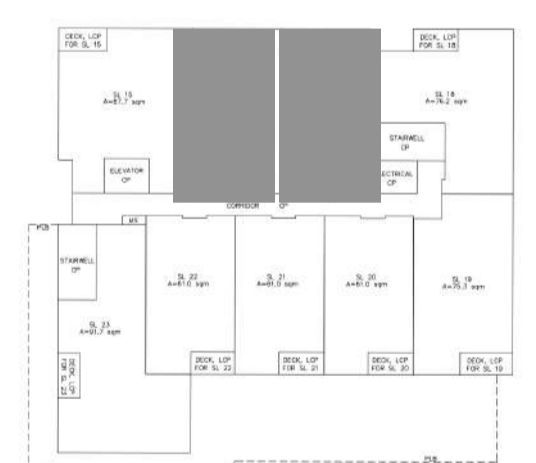
PLAN B1

2 Bedrooms
1 Bathroom

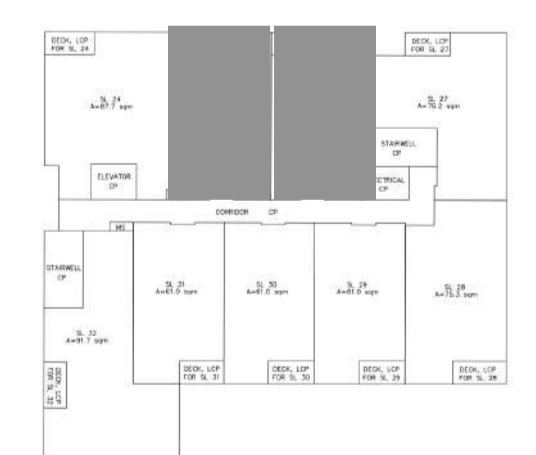
Interior: 689 Sq.Ft.
Exterior: 48 Sq.Ft.
Total: 737 Sq.Ft.



Level 3



Level 4



Level 5



*In our continuing effort to improve and maintain the high standard of the Aegean Homes, the developer reserves the right to modify or change plans, specifications, features and prices without notice. E. & O.E.



Aegean Homes

Buyer's Package

ADDRESS	1360 Victoria Street, Squamish, B.C., Total Units: Residential 32 + Commercial 6
Amenities	Outdoor lavish green terraces Indoor/outdoor yoga and stretching zones
Assignment Fee	1% of the Assignment Price plus GST
Ceiling Height	12' ceilings on the main level, 9 ' high ceiling on upper levels
Color Schemes	Light or Dark
Estimated Completion	JUNE 2022
Warranty	2-5-10 Home Warranty
Deposit Structure	10% of the Purchase Price as follows, payable to "PLLR Lawyers In Trust" : \$10,000 personal cheque or bank draft at offer; increase to 10% total deposit in 7 days after the acceptance of the offer by the Vendor.
Parking	1 parking stall for each residential units.
Strata Fees	\$0.29/SQ.FT.
Pets	2 dogs or 2 cats or 1 of each
Rentals	Allowed
Monthly&Daily Rents	Approx. \$2,300-2,500/Month = \$27,600/Year 5% Return Rate Approx. \$230-260/Day = \$91,250/Year 10-17% Return Rate
Upgrades	Full-size front-loading Whirlpool washer and dryer, home security system installation, complete vacuum installation, window bug screens.
More Options	Kitchen Central Island, Upgraded Appliances

*In our continuing effort to improve and maintain the high standard of the Aegean Homes, the developer reserves the right to modify or change plans, specifications, features and prices without notice. E. & O.E.